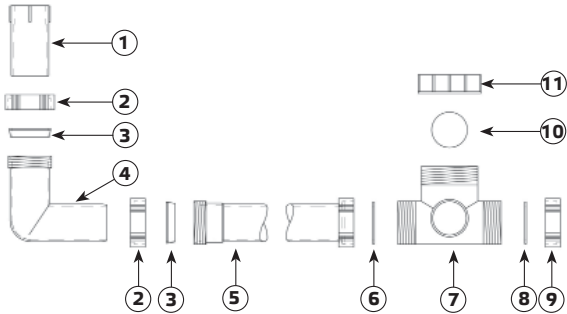
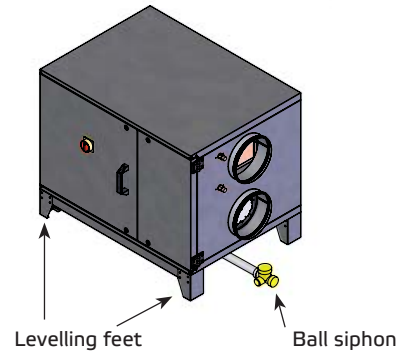


## System-compatible siphon SYS

Scope of supply :



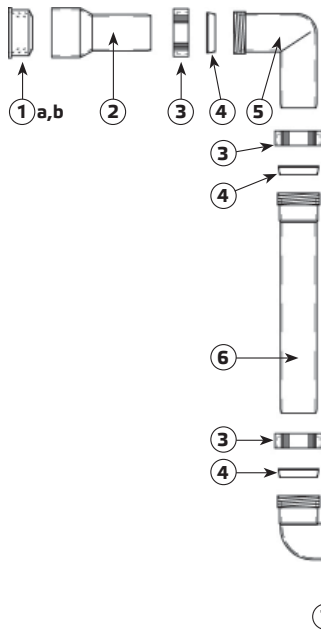
- |  |                               |
|--|-------------------------------|
| 1. Connection with internal screw thread 1" x 20 | 8. Round rubber gasket D = 48 |
| 2. Union nut 1 1/2"                              | 9. Screw cap 1 1/2"           |
| 3. Combo gasket D = 40 (wedge-shaped)            | 10. Back-pressure ball        |
| 4. Elbow pipe D = 40                             | 11. Screw cap 2"              |
| 5. Pipe D = 40 with union nut 1 1/2", L = 450 mm |                               |
| 6. Gasket 1 1/2" (flat)                          |                               |
| 7. Back-pressure valve                           |                               |



- Ball siphon
- With levelling feet

Type	ID	For models:	connection
<b>SYS 01</b>	123971	ETA 600 H, ETA 1200 H, ETA 2400 H	D 40 (1 1/2 ")

Scope of supply :



- |                                       |
|---------------------------------------|
| 1.a Rubber sleeve DN 30 / 50          |
| 1.b Rubber sleeve DN 40 / 50          |
| 2. Connection piece DN 40 / 40        |
| 3. Union nut 1 1/2"                   |
| 4. Combo gasket D = 40 (wedge-shaped) |
| 5. Elbow pipe D = 40                  |
| 6. Immersion pipe D = 40, L = 250 mm  |
| 7. Connection elbow D = 40            |
| 8. Gasket 1 1/2" (flat)               |
| 9. Back-pressure valve                |
| 10. Round rubber gasket D = 48        |
| 11. Screw cap 1 1/2"                  |
| 12. Back-pressure ball                |
| 13. Screw cap 2"                      |



- Ball siphon

Type	ID	For models:	connection
<b>SYS 02</b>	125204	ETA 600 F, ETA 1200 F, ETA 2400 F ETA 600 V, ETA 1200 V, ETA 2400 V	D 40 (1 1/2 ")