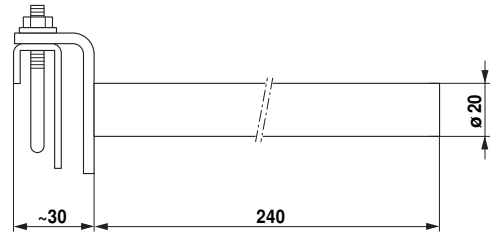
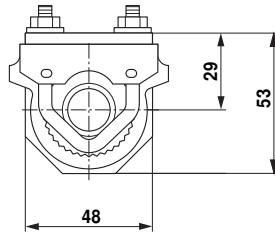
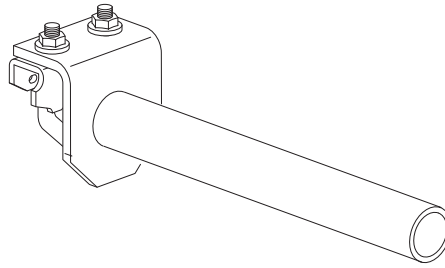
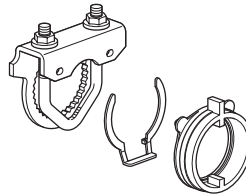


**Achsverlängerung AV8-25**

- Länge ca. 250 mm
- Für Klappenachsen  $\varnothing$  8 ... 25 mm
- $\varnothing$  Verlängerung 20 mm


**Einseitiger Klemmbock K-ENSA**

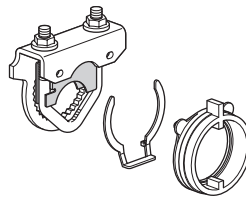
- Für Klappenachsen  $\varnothing$  8 ... 26 mm



Verpackungseinheit: 20 Stück

**Einseitiger Klemmbock K-ENMA**

- Für Klappenachsen  $\varnothing$  8 ... 26 mm

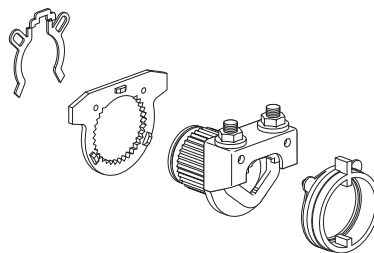


Verpackungseinheit: 20 Stück

$\varnothing \geq 10.0$ mm	$\varnothing \geq 16.0$ mm	$\varnothing \geq 8.0$ mm
$\oplus 12.7$ mm 1/2"	$\oplus 19.0$ mm 3/4"	$\oplus 25.4$ mm 1"
$\varnothing \leq 18.0$ mm	$\varnothing \leq 22.0$ mm	$\varnothing \leq 26.7$ mm

**Kehrbarer Klemmbock K-NA**

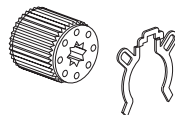
- Für Klappenachsen  $\varnothing$  8 ... 20 mm



Verpackungseinheit: 20 Stück

**Formschlusseinsätze ZF..-N..A**

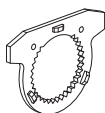
Artikelnummer	Achsmasse
• ZF8-NMA	8 x 8 mm
• ZF10-NSA	10 x 10 mm
• ZF12-NSA	12 x 12 mm
• ZF15-NSA	15 x 15 mm
• ZF16-NSA	16 x 16 mm



Verpackungseinheiten: je 20 Stück

### Drehwinkelbegrenzer

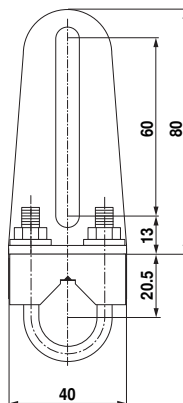
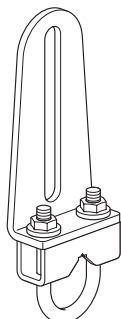
- Für Formschlusseinsatz
- Für kehrbaren Klemmbock K-NA



Artikelnummer 20334-00001

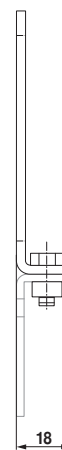
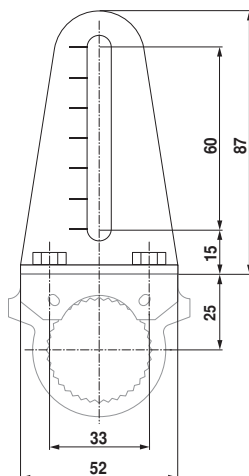
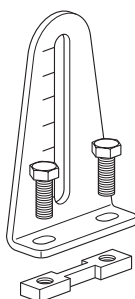
### Klappenhebel KH8

- Für Klappenachsen
- Stahl verzinkt
- Klemmbereich  $\varnothing$  10 ... 18 mm
- Schlitzbreite 8,2 mm



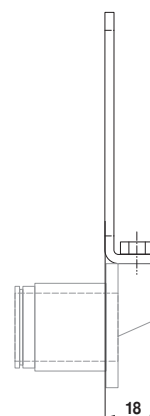
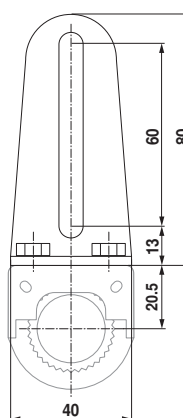
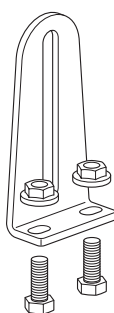
### Antriebshebel AH-25

- Für Standardklemmbock (einseitig) K-ENSA
- Schlitzbreite 8,2 mm
- Stahl verzinkt

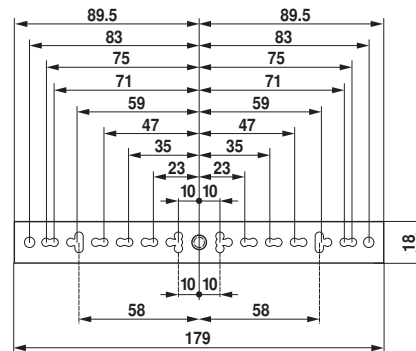
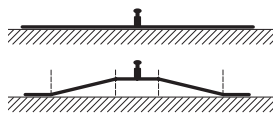
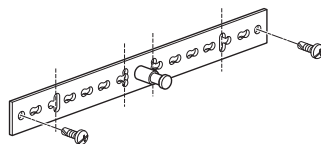


### Antriebshebel AH-20

- Für kehrbaren Klemmbock K-NA
- Schlitzbreite 8,2 mm
- Stahl verzinkt



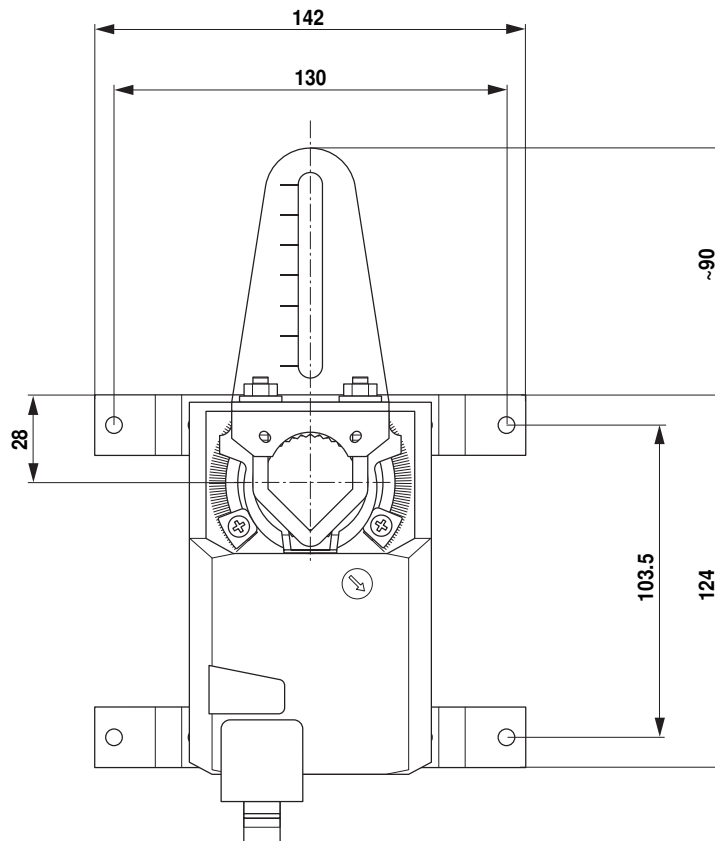
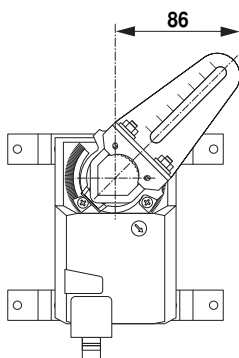
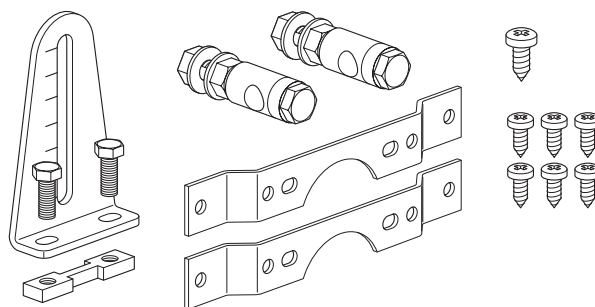
Verdrehsicherung Z-ARS180



Verpackungseinheit: je 20 Stück

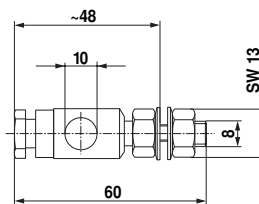
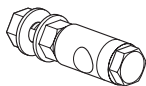
Montageset für Gestängebetätigung ZG-NMA

• Für Flachmontage



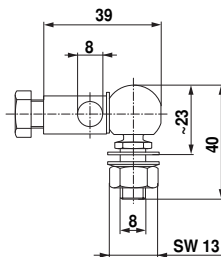
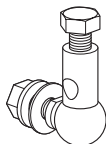
**Kugelgelenk KG10A**

- Passend zu Klappenhebeln KH8
- Für Rundeisengestänge mit  $\varnothing$  10 mm
- Stahl verzinkt

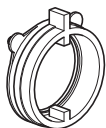


**Kugelgelenk KG8**

- Passend zu Klappenhebeln KH8
- Für Rundeisengestänge mit  $\varnothing$  8 mm
- Stahl verzinkt



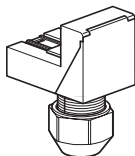
**Stellungsanzeige Z-PI**



Verpackungseinheit: 20 Stück

**Klemmenabdeckung Z-TP**

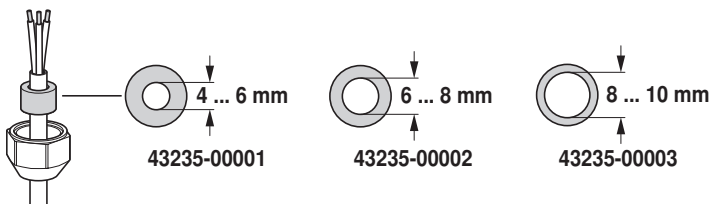
- Abdeckung IP54 für Antriebe mit Klemmen



Verpackungseinheit: 20 Stück

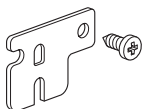
**Dichtungseinsätze zu Z-TP**

Artikelnummer	$\varnothing$
• 43235-00001	4 ... 6 mm
• 43235-00002	6 ... 8 mm
• 43235-00003	8 ... 10 mm



**Bodenplattenverlängerung Z-NMA**

- Verlängerung von NM.. zu NM..A..
- Stahl verzinkt



Verpackungseinheit: 20 Stück

